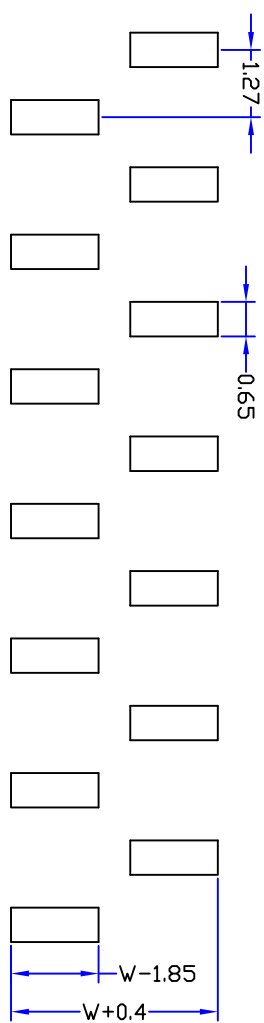
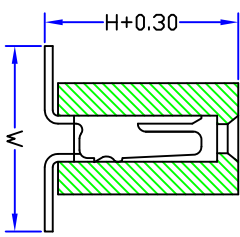


1.27\*No. of Positions+0.4±0.25



PCB LAYOUT

Dimension antitheses list(尺寸对照表)

Item(项目)	A	B	W	H	W1	端子形状
Dimension(尺寸)	见左表	见左表	3.50	3.40	2.10	U型

Drawing By			Date		Date		Date	
Check By			Date		Date		Date	
Approval By			Date		Date		Date	
Units mm			Scale 1:1		Drawing By		Date	
Tolerance Unless Otherwise Specified					Check By		Date	
.X ~ ± 0.25					Date		Date	
.XX ~ ± 0.20					Date		Date	
.XXX ~ ± 0.15					Date		Date	
Angle ~ ± 3°					Date		Date	
Released			29/10-09		Date		Date	
Description			ECN.No.		Date		Date	
REVZONE LTR			3		4		5	
1			2		3		4	
1			2		3		4	
1			2		3		4	



深圳市联益电子有限公司  
[HTTP://WWW.LYCONN.COM](http://www.lyconn.com)

Title 1.27 单排排母 SMT 系列 / 右贴

Date	2009-10-29	Sheet	1 of 1	Thirt Angle Projection	⊕
Drawing No.	23XX1XXMXX101	Customer No.			

Ordering Code

- ① Series No.: 2 3 XX 1 XX M X X 1 0
- ② Contact Plated: 0=Tin 1=Gold Flash 2=Gold 3u" 3=Gold 5u" 4=Gold 10u" 5=Gold 15u" 6=Gold 30u"
- ③ Insulator Height: 20=2.0mm 34=3.4mm 43=4.3mm 44=4.4mm
- ④ Material Type: 0=PSS 3=Nylon-66 1=PBT 4=Nylon-6T 2=LCP 5=PA46
- ⑤ Dip Spacing: 1=Single row 2=Double row
- ⑥ Color: 1=Black
- ⑦ Number of Contacts: Single row = 01 to 50 Double row = 02 to 100
- ⑧ Customer Request
- ⑨ Tial & Mounting Style: S=Strait Dip Type M=Strait SMT Type

**SPECIFICATIONS:**  
 Current Rating: 1.0 AMP  
 Contact Resistance: 30mΩ Max  
 Insulation Resistance: 1000MΩ Min  
 Withstand Voltage: 300V AC/minute  
 Operation Temperature: -40°C to +105°C

**MATERIALS:**

Contact Material: Copper Alloy  
 Contact Plating: Gold or Tin over 50u" Ni  
 Insulator Material: Polyester(UL94V-0)